

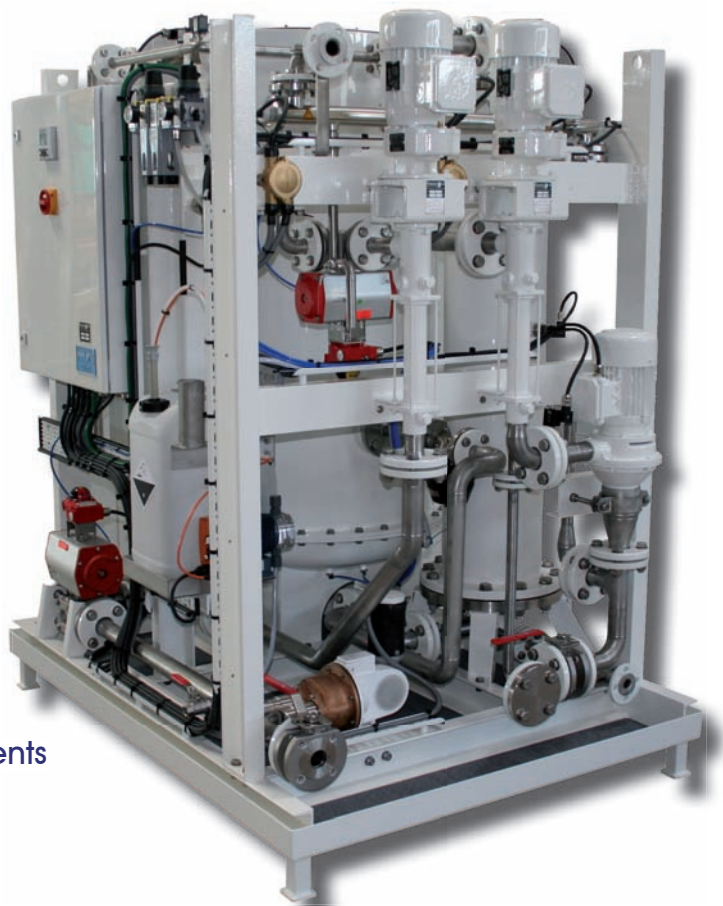
## WASTE WATER TREATMENT

High Quality sewage treatment plants

Certified according to **MEPC 159 (55)**

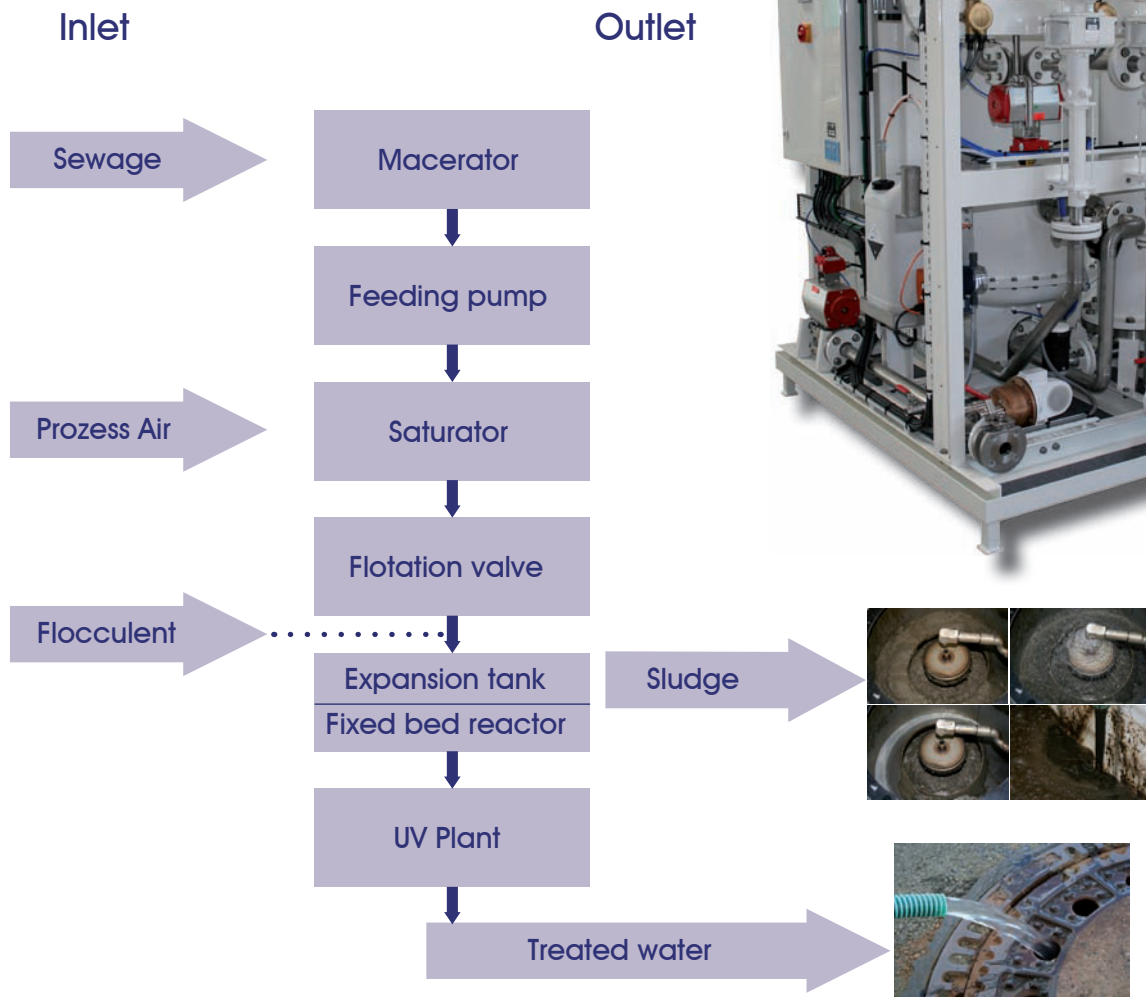
### HL-Cont Plus

- ▶ Easy operation
- ▶ Automatic cleaning
- ▶ High flow rate
- ▶ Small foot print
- ▶ Small holding tank requirements
- ▶ Low energy consumption
- ▶ No sensitive parts
- ▶ No blocking or clogging of filters & membranes



The process/technical description of the HL Cont's PLUS is based on physical-biological treatment:

- ▶ Maceration of sewage
- ▶ Microflotation, also known as "white water filtration" combined with flocculent for the reduction of TSS, BOD and COD
- ▶ Fixed bed reactor for BOD and COD reduction
- ▶ UV disinfection



All sewage needs to be collected in one ship's holding tank. Depending on the calculated load and number of persons the tank must have a sufficient size as the working volume between high level and stop plant is one important issue for the HL Cont PLUS.

HL-Cont PLUS	Capacity [litre/day]	Persons @Yacht/Cruiser 12/24h	Persons @Others 12/24h	Size WxLxH [m]	Empty Weight [kg]	Electrical Consumption	Vent Connection
05	12.000	25/50	30/65	1.0x1.3x1.4	680	1.7 kW	1"
10	24.000	50/100	65/130	1.2x1.6x1.8	820	2.5 kW	1"
20	48.000	100/200	130/260	1.6x2.1x2.1	1450	5.5 kW	1"
40	96.000	200/400	260/520	2.3x2.5x2.3	1900	8.5 kW	1"
80	192.000	400/800	520/1040	2.1x4.7x2.7	4700	15 kW	2"